

D	X	1	2	3

SOIL STRUCTURE

is determined by how individual soil granules clump or bind together and aggregate, and therefore, the arrangement of soil pores between them. Soil structure has a major influence on water and air movement, biological activity, root growth and seedling emergence. Soil structure describes the arrangement of the solid parts of the soil and of the pore space located between them (Marshall & Holmes, 1979). It is dependent on: what the soil developed from; the environmental conditions under which the soil formed; the clay present, the organic materials present; and the recent history of management.

SOIL MORPHOLOGY

is the field observable attributes of the soil within the various soil horizons and the description of the kind and arrangement of the horizons. C.F. Marbut championed reliance on soil morphology instead of on theories of pedogenesis for soil classification because theories of soil genesis are both ephemeral and dynamic.

SLY

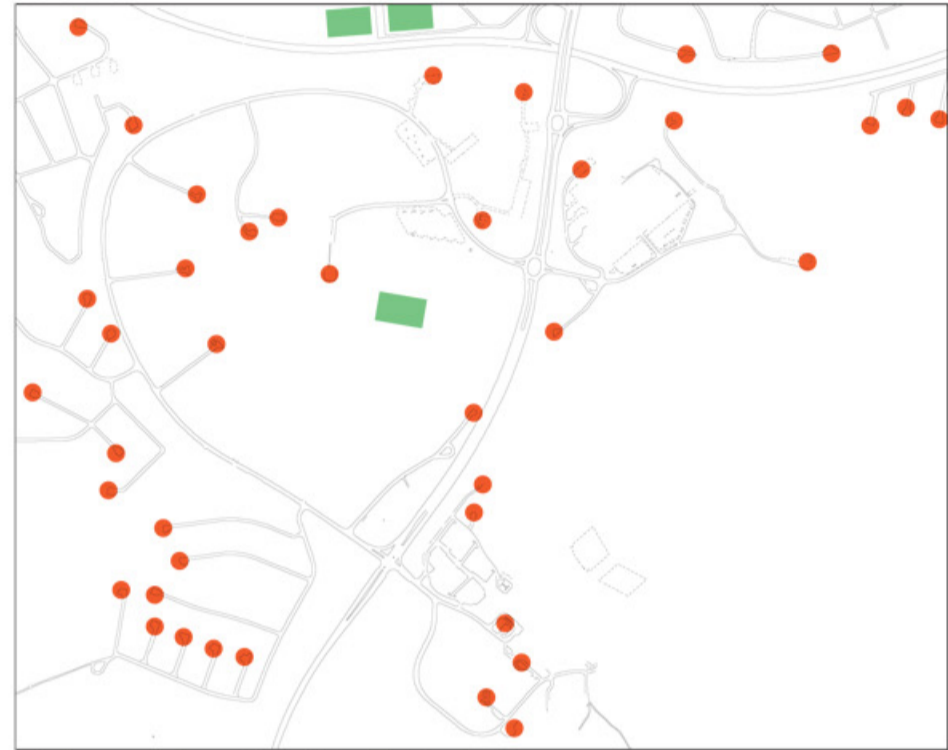
is a Swedish word. It rhymes with forestry. To the forestry SLY means young trees without economic value. SLY is brushwood; the tree sprouts filling in wherever land is not kept. SLY is whatever grows when you're not looking. SLY is the garden of that overgrown mansion. SLY is raw nature. SLY is the first stage of a forest. SLY moves in slow motion but is an ever-altering state.



VILBERGEN

EXISTING NETWORKS

scale 1:16,000



existing roads for motor traffic with dead ends

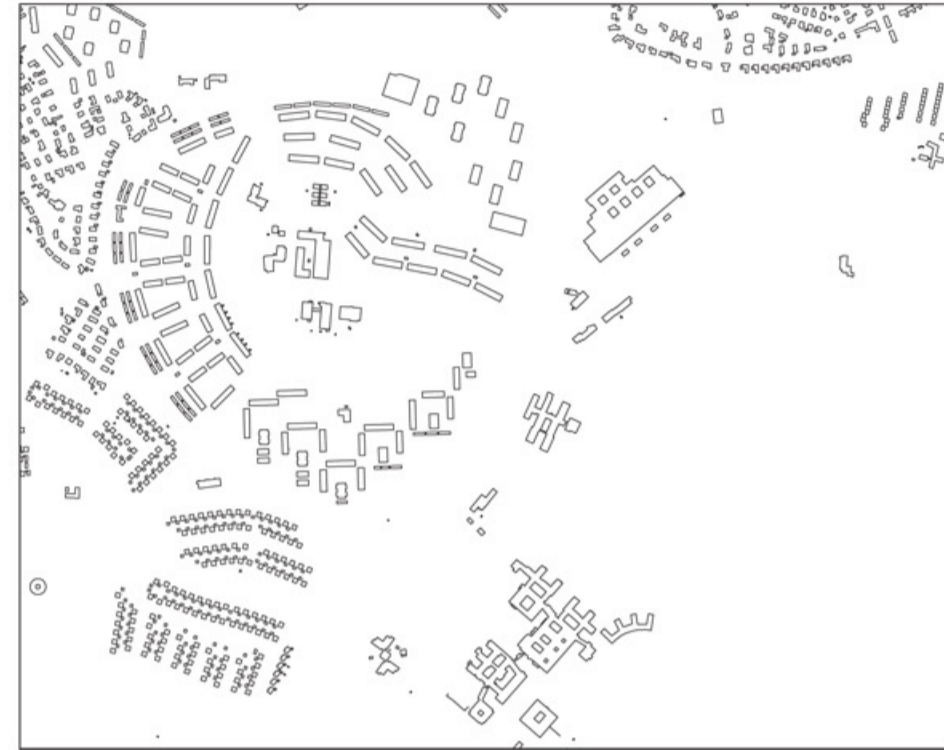
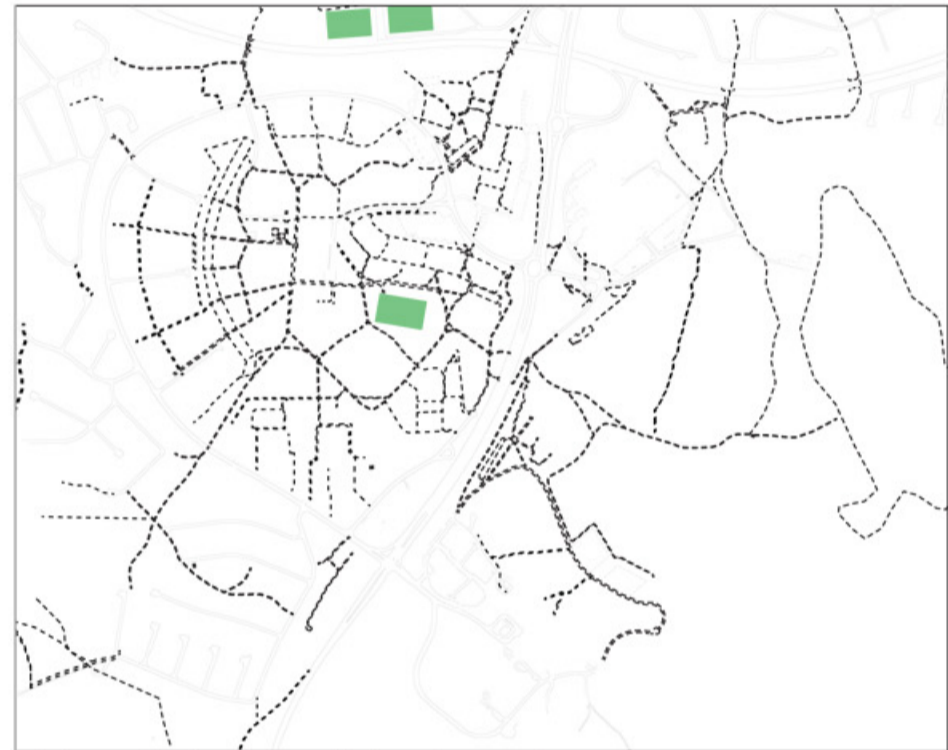
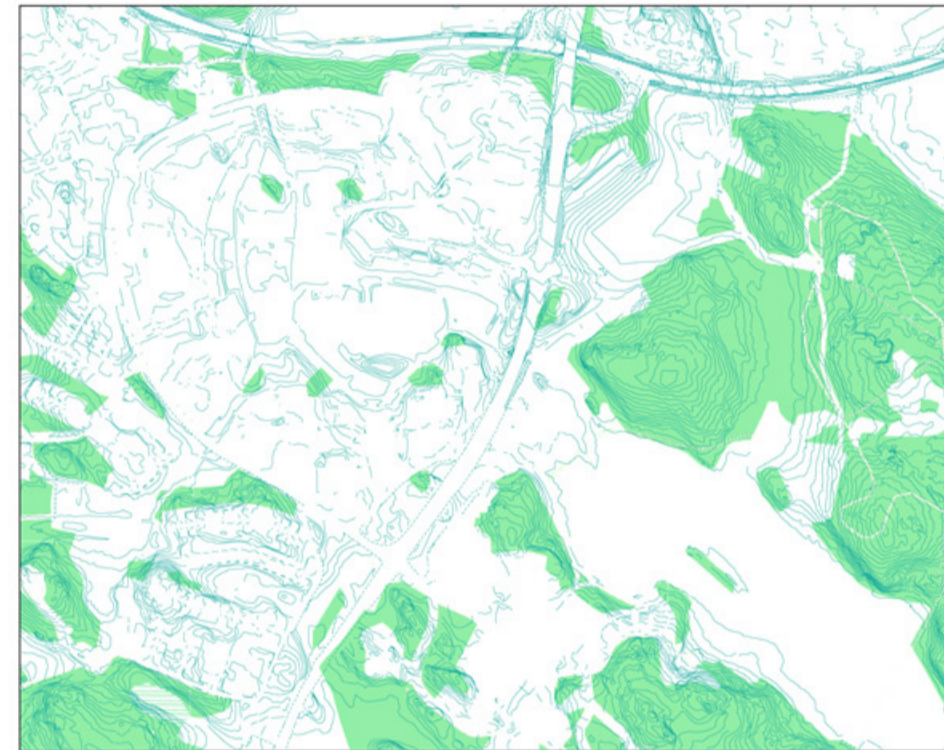


figure ground



existing pedestrian paths and informal connections



nature marks and topographic contours

ADDED NETWORKS

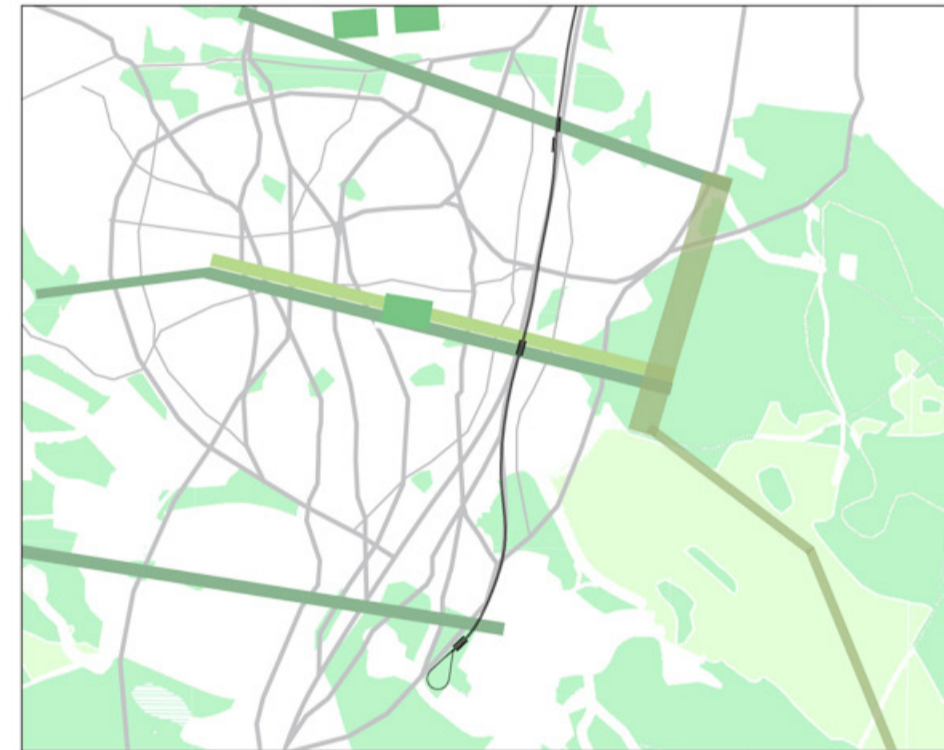
scale 1:16,000



modernistic offset



property subdivision



park and brush corridors to Vilbergen natural preserv and power line zone



added links

FALLOW GROUND

An early spring day and the green area at Vilbergen lies empty. The grass is trimmed and kept in line. Surrounding the green are sleepy but well-proportioned modernist blocks laid out in a big horse shoe formation. The blocks repeat themselves to create that well-known placelessness. The field seems overwhelmingly large, its vast openness inhibits as much as it invites. The whole area consists of two ingredients: lawn and grey modernist blocks.

LAND AND PROPERTY SUBDIVISION

The city as a democratic idea. Regardless of who we are or what we do, we represent pieces of our community and each building each part of the ground is a part of the city.

THE DELTA PRINCIPLE

The road system is manifold, increased by the branches of each turn, like a delta.

MEDIAVAL ON YOUR GRASS

Rationally irrational. The orthogonality of the existing orders makes one long for extreme irregularity. Add a few new connections and upgrade the existing footpaths to streets and things start to get perfectly medieval.

The combined effect of all networks put together form one tight new mesh with a number of different directions.

SPREAD NORRKÖPING

Any path may lead from a to b, but within a city this is perhaps its least important role. There are many types of efficiency. The delta principle is about spreading the traffic flow, about spreading all flows so that it feeds a larger area.

LAYER CAKE

Vilbergen is full of history. Much of it is fairly recent, but the proposal works on the principal of adding new layers while keeping as much of the old as possible. This is important to maintain many of the old functions but also to create a diversity of geometries and directions. In the end the area will get more history, more characteristics. The proposal adds new devices that are meant to generate protection as well as new company for what is already here.

TERRA CETERA

Everything that is not part of the system of streets or the SLY corridors outside the existing buildings is divided into hundreds of new lots ranging in size from fifty to thousand m². Most are around 200-400 m². All the lots are marked out and put up for sale, lease or rent.

FERTILIZING THE UNEXPECTED

The object is to alter the way we think about land use and, in the long run, slow down speculation. Releasing all this land on the market at once is meant to encourage non-developers to acquire land and make their mark on the city. Naturally it also has the potential to lower prices drastically. The lots are generally of a very small to small size. Mixed use is just that. Any activity. If it's noisy or polluting discuss with your neighbours, general laws apply. The goal is to encourage an active city with active citizens. This proposal is perhaps especially directed to people with more time than money. You can rent a lot to grow potatoes, maybe even enough to sell some, but you probably wouldn't rent one if you are already in the potato business! They are ideal for any kind of project that may take a while to finish.

IMPLEMENTATION IN STEPS

The existing streets are with a few exceptions kept largely as they are. All walkways and established paths become part of the street network. They will allow all kinds of traffic. In the new plan the legal widths of the paths and walkways will increase to 5-8 meters. This will be marked out but it might take a while for it to be maintained in accordance with its new use.

Each modernist block will have an area of its own defined by the block's geometry and with an outward offset of 6 to 8 meters. The offset area will also function as a street. Lastly, an additional mesh is created by a series of new connections working across the entire area. Together they will create a new intensive mesh that will spread out traffic throughout the area.

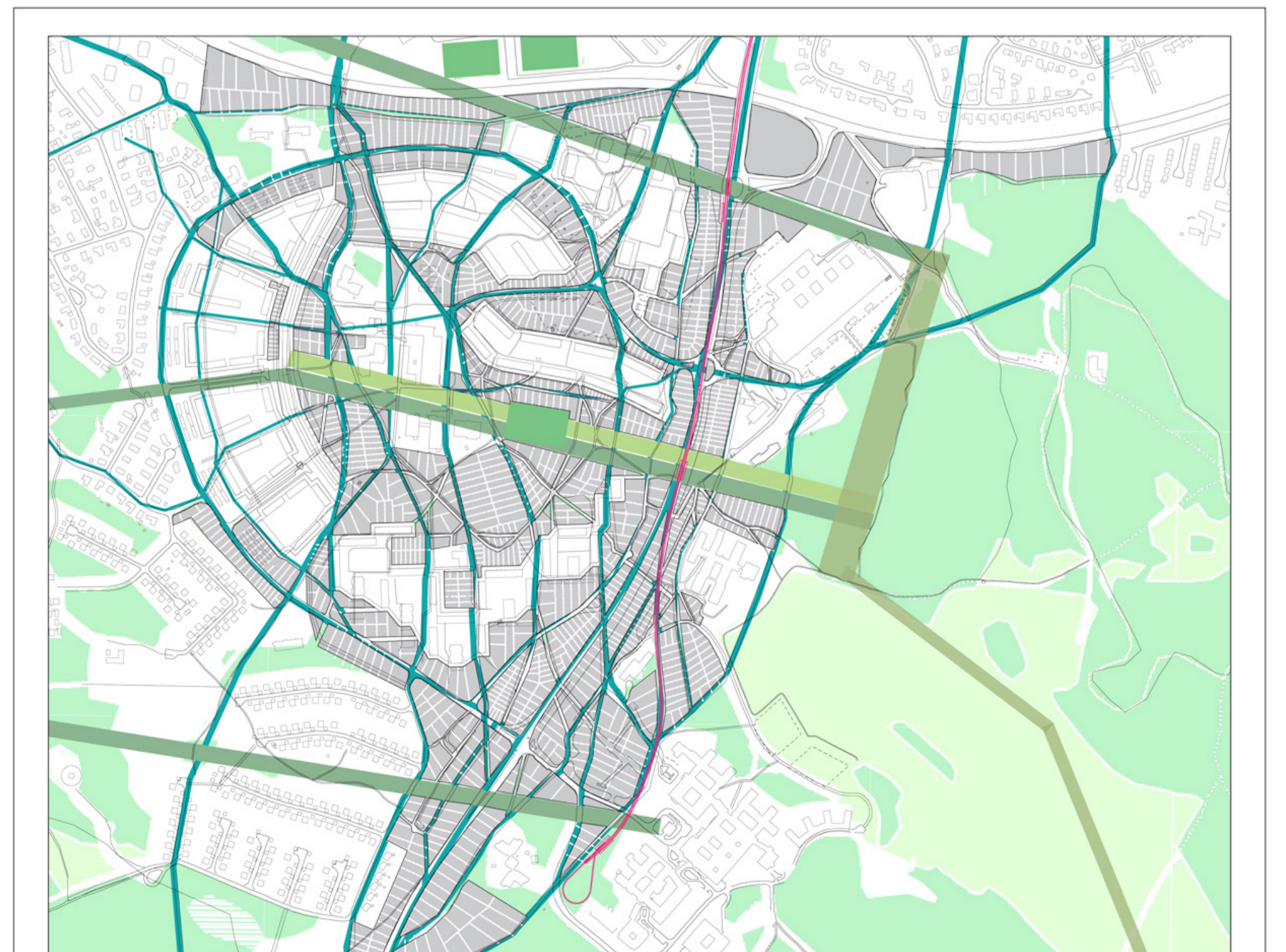
GREEN BRIDGES

Three main green axes cut right through the entire area; 25-30 meters wide stretches of SLY - wild and untouched nature. The first SLY stretch links the north part of Vrinnevi nature reserve across the roundabout on Gamla Övägen through the first housing block on vilbergsgatan, beyond it across the söderleden main road on an ecoduct to make a direct connection to and bring the natural reserve right to Ektorp area and its two football grounds. The second SLY stretch directly connects Skarphagen and its green areas to the Vrinnevi mountain via the heart of the Vilbergen area. This is a 30 meter wide SLY section that is coupled with one long park of equal width.

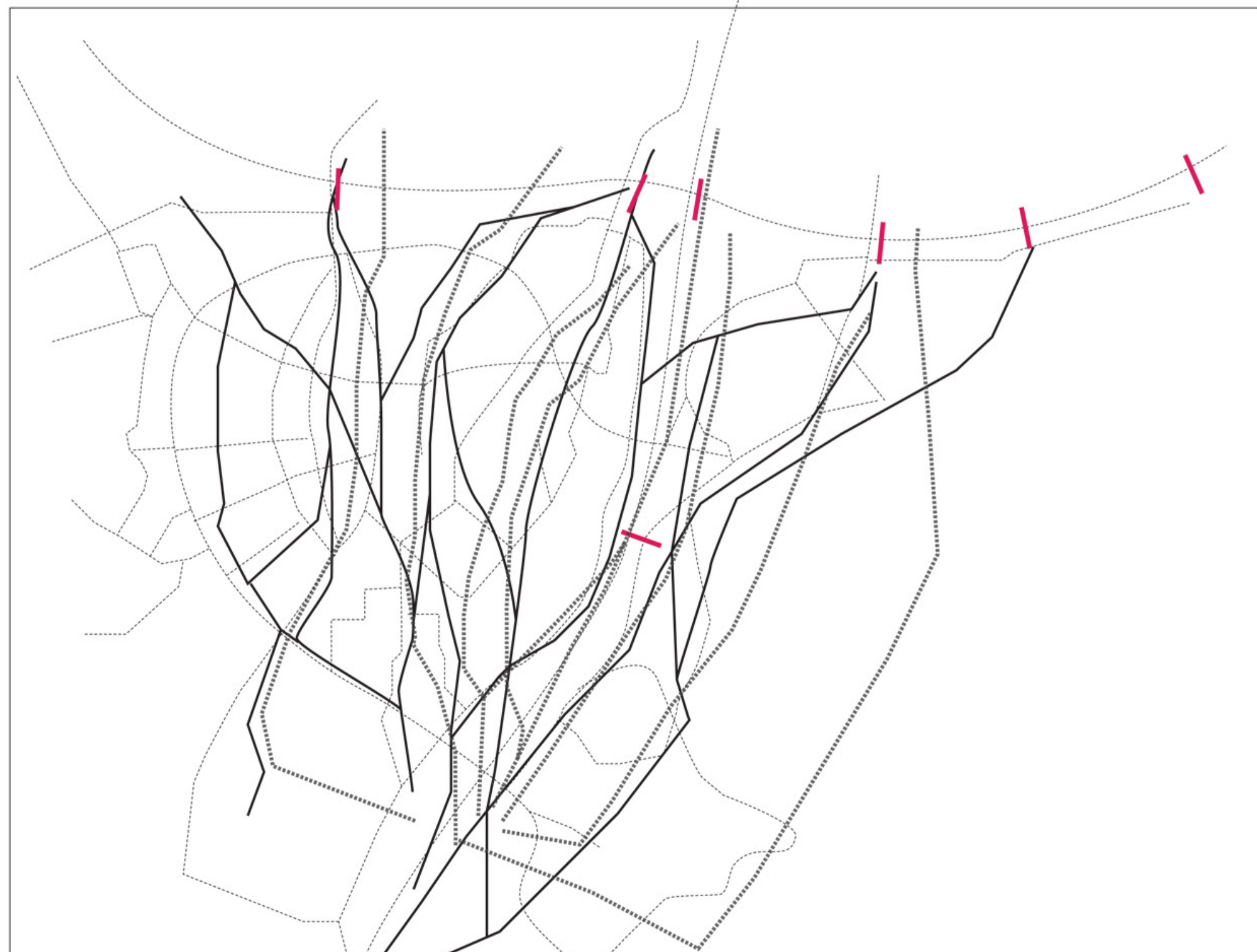
The park has tennis courts, a football ground, swimming pool outdoor theatre boule alleys ping-pong tables and more. It is also has a number of fountains and planted trees and benches to sit on. The third axis connects the Kättsätter villa area with the forest around the hospital. Where the streets meet these areas, the surface will be similar to an overgrown dirt road.

COMBINED MESH

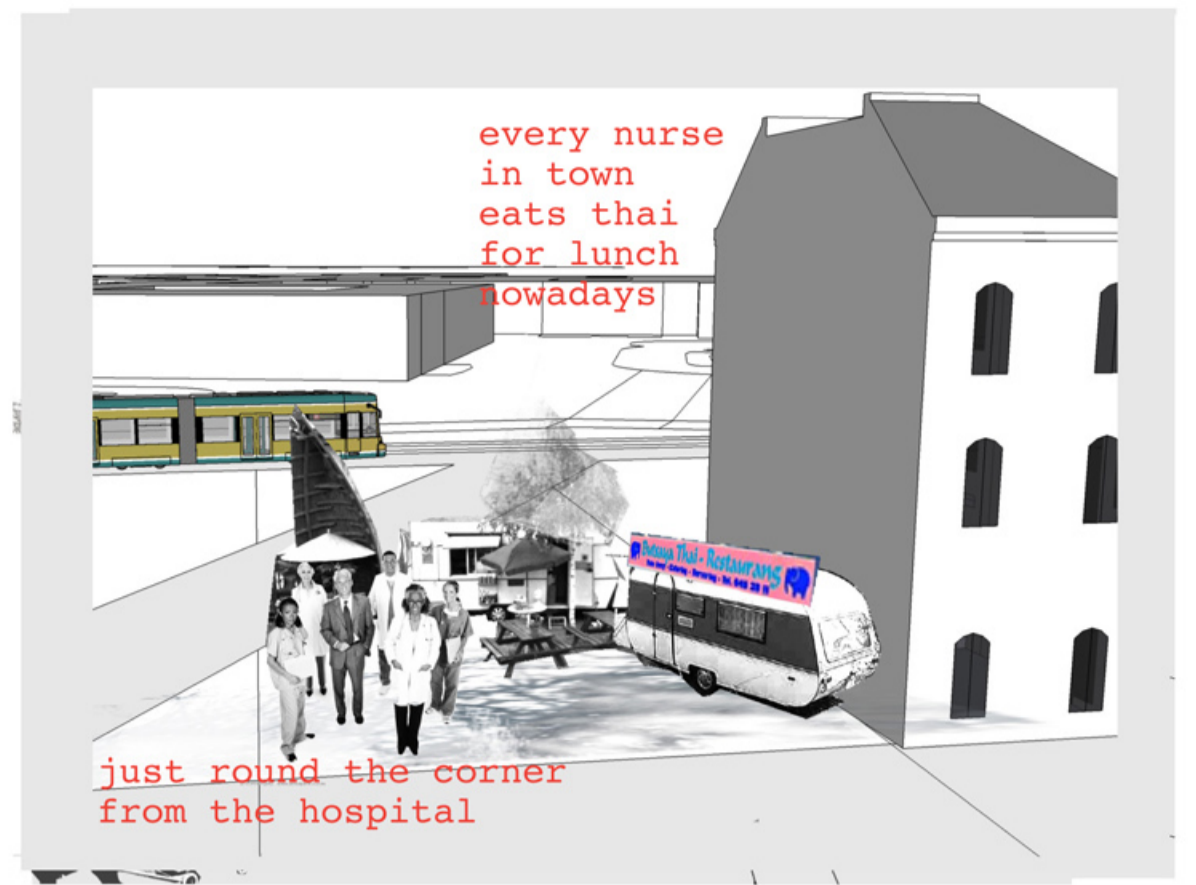
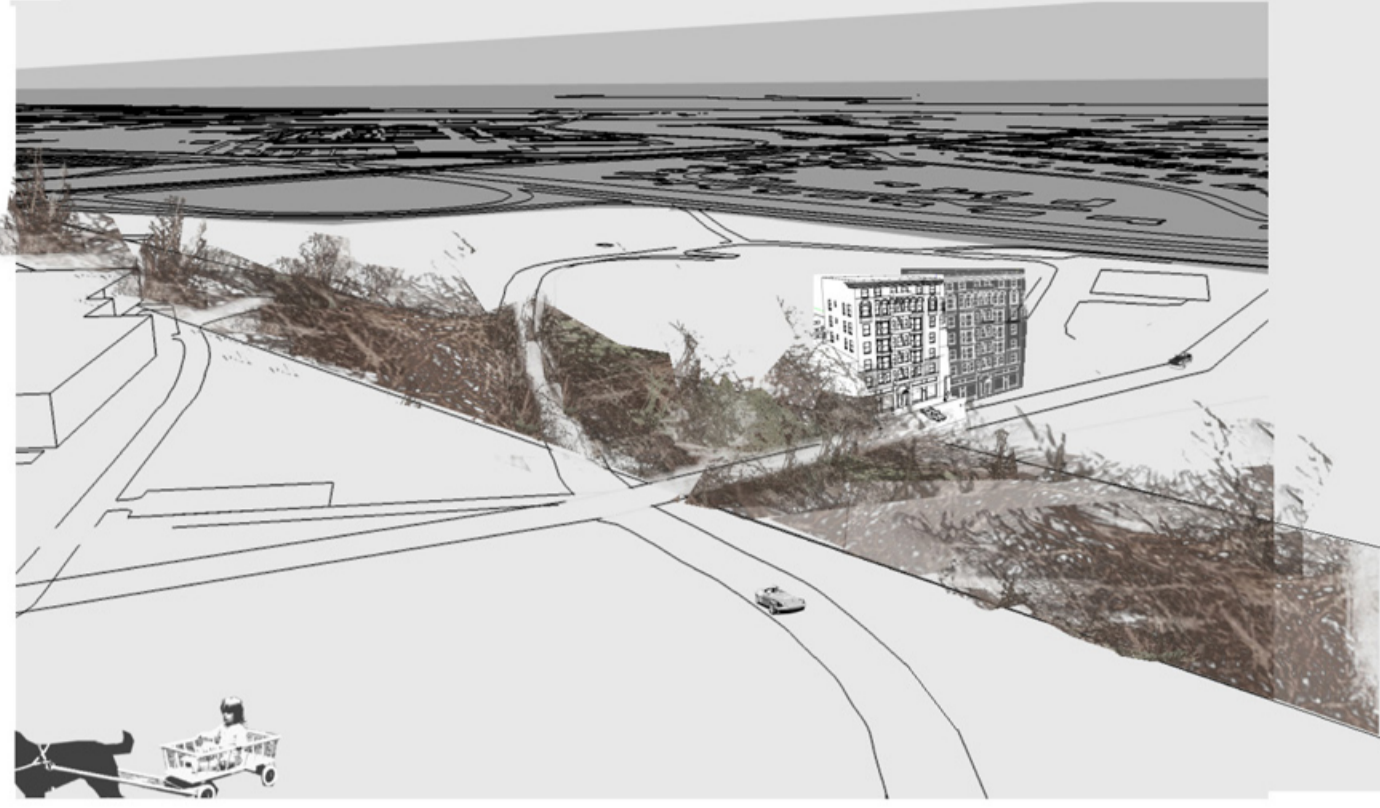
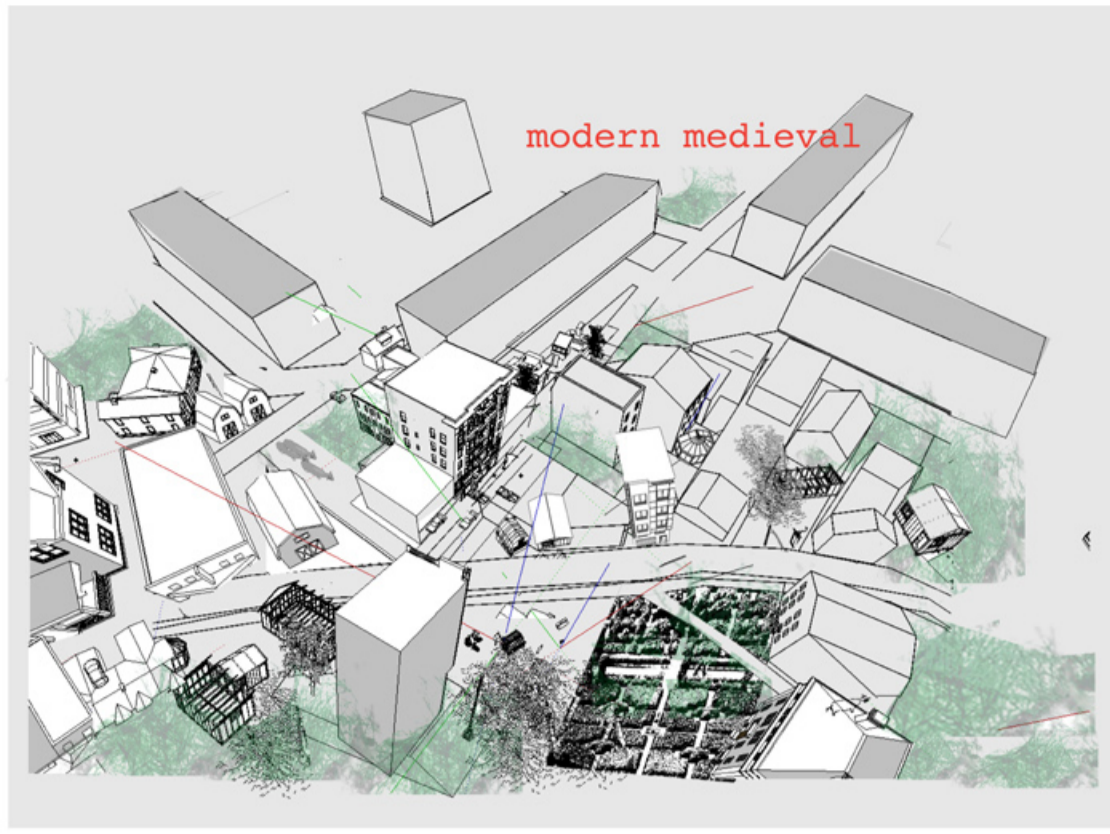
scale 1:8,000



delta-x



SLY corridor with nature spilling out on to the crossing streets



LOCAL PLAN
scale 1:2,000



PLANBESTÄMMELSER
Följande gäller inom områden med redovisade bebyggelser. Där beteckning saknas gäller bestämmelser inom hela planområdet. Endast angiven användning och utformning är tillåten.

GRÄNSBETECKNINGAR
Planområdesgräns ritad 3 m utanför planområdets gräns
Användningsgräns
Egenskapsgräns

ANVÄNDNING AV MARK
ANVÄNDNING AV ALLMÄNNA PLATSER
LOKALGATA Lokaltrafik
TORG Torghälsö
PARKORSALE Parkorsäle
NATURORSALE Inget underhåll, ingen svervning

ANVÄNDNING AV KVARTERSMARK
UNIV Universalanvändning, bostadsverksamhet

UTNYTTJANDEGRÄD
Högsta byggnadshöjd i meter
Fästigheterna får bebyggas i sin helhet upp till angiven höjd.

BEGRENSNING AV MARKENS BEBYGGANDE
Marken får inte bebyggas

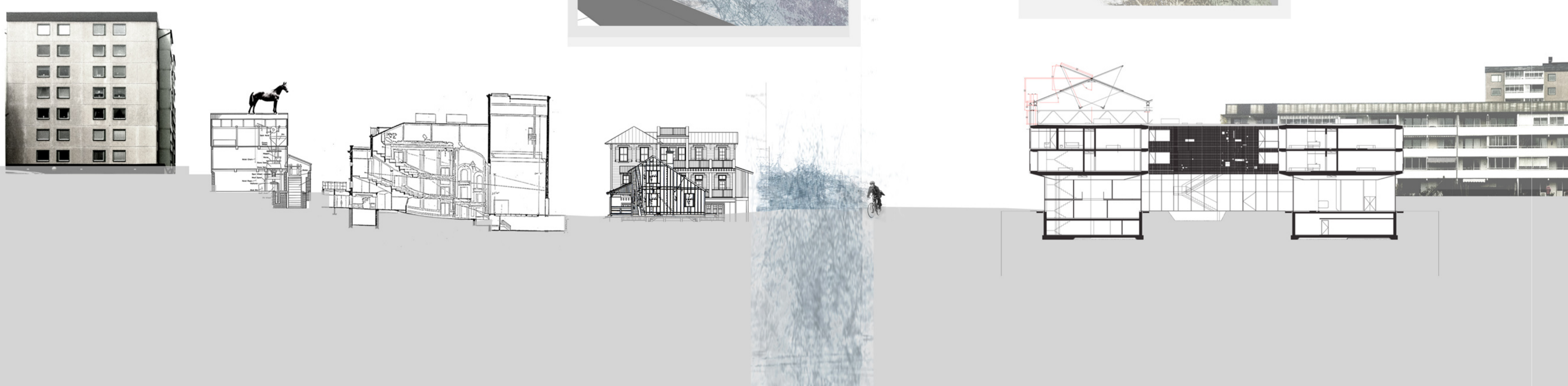
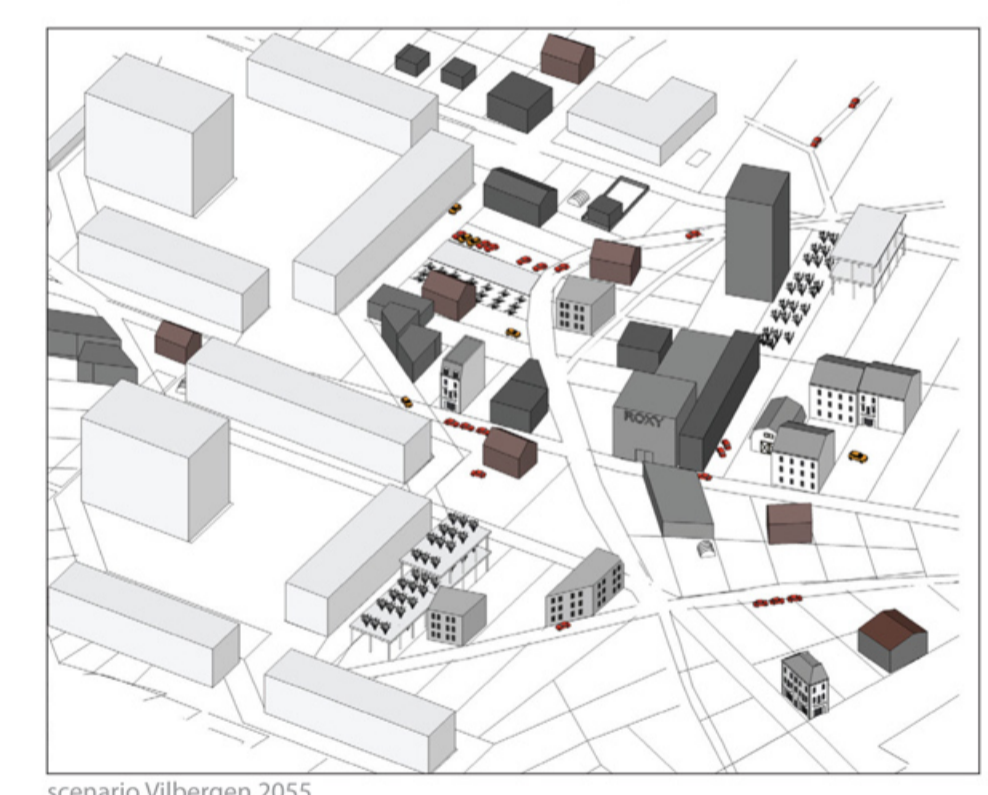
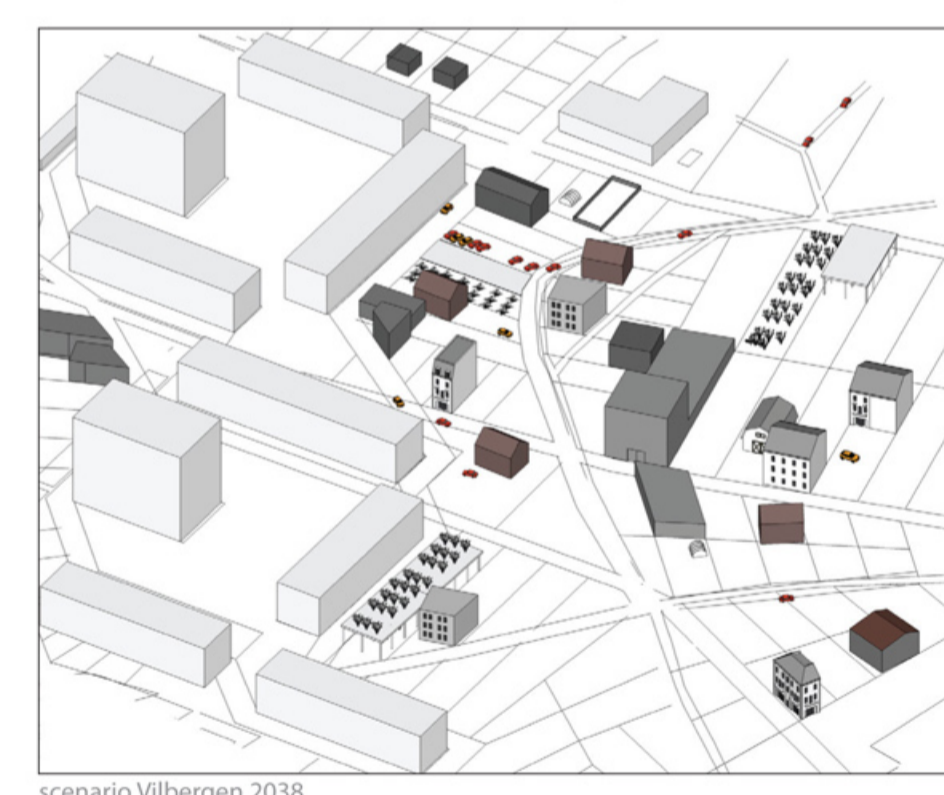
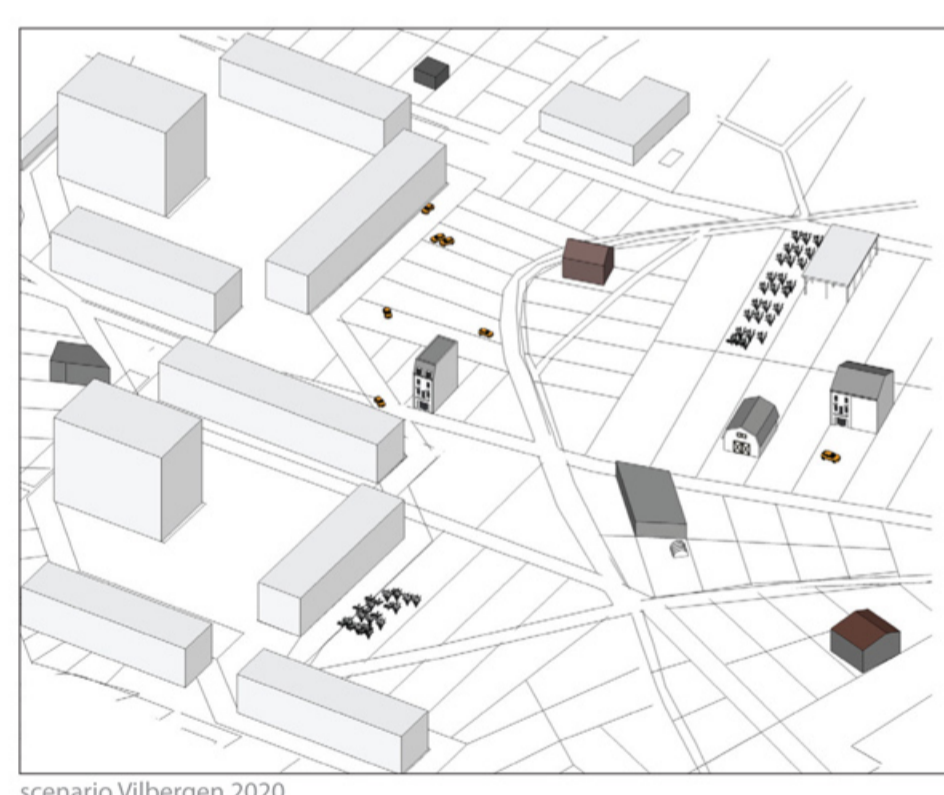
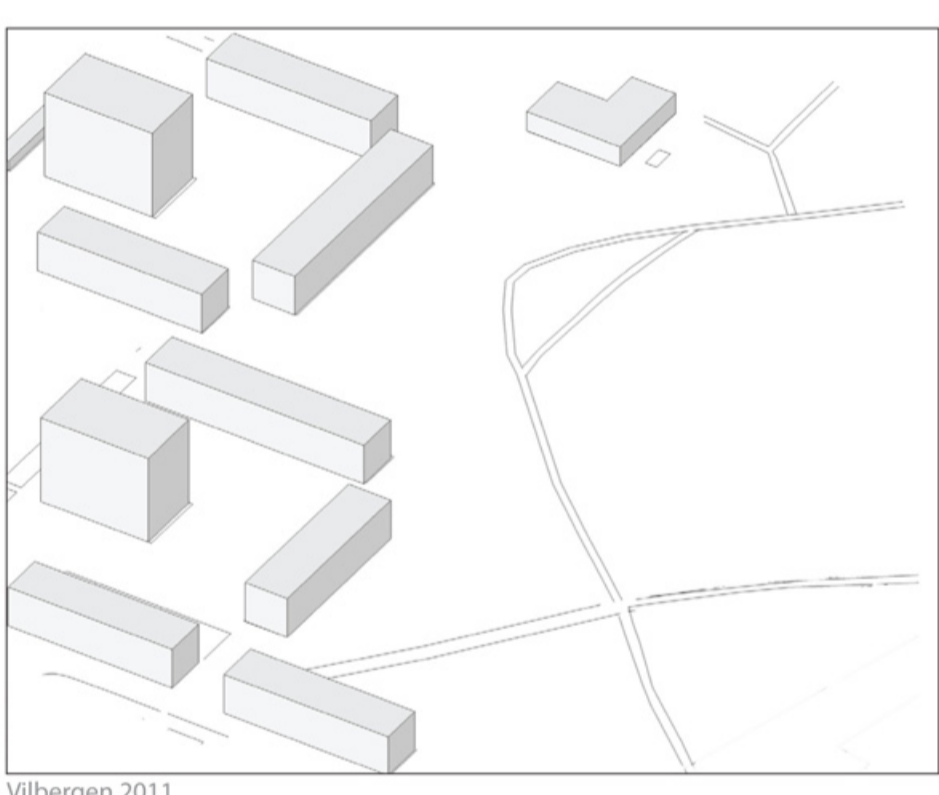
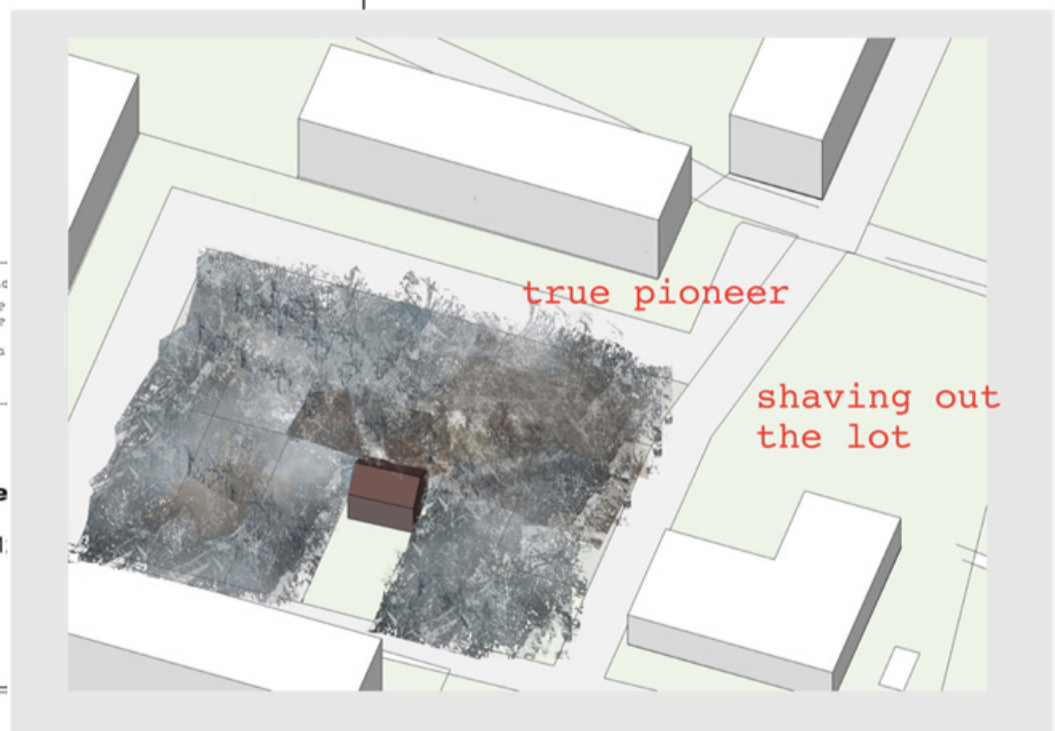
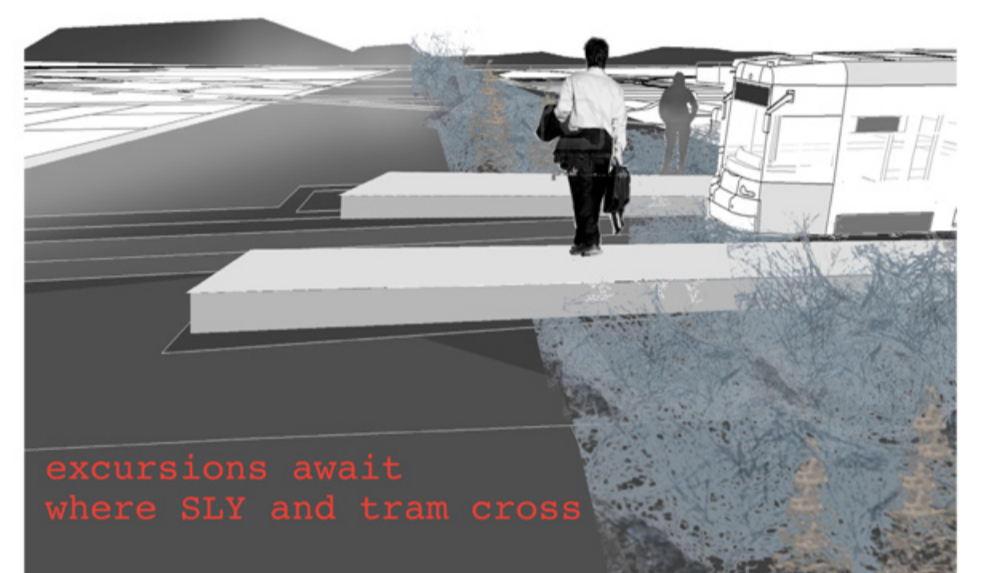
ADMINISTRATIVA BESTÄMMELSER
Bygglösa får inte inneha vägar, vatten- och spillvattenledningar för utbyggda. Bygglösa ska inte för kompletter- och tilläggsarbeten med byggnadsarean upp till 60 kv m som uppfyller planbestämmelserna i övrigt. Skyldighet att inlämna byggnadsansökan kvartalsvis.
Genomförandetid är 5 år efter att planen vunnit laga kraft. Norrköpings kommun är inte huvudman för sin plats.

Beftintliga gångvägar
Beftintliga hus.

Antagande Pe
Antagande Se
Lagkraft Sv
Lagkraft Fv

BETAL PLAN FÖR Vilbergen och Vrime
Norrköpings Kommun
Stadsarkitektkontoret 201

Planarkitekt



D	X	1	2	3

LOST CONTROL

Any unbought or unrented property within the plan that is marked for universal use will return to unkept nature, weeds will not be removed and no lawn mower will touch it, it will be overgrown with SLY and gradually turn to forest. This is a key dynamic in the logic of the plan.

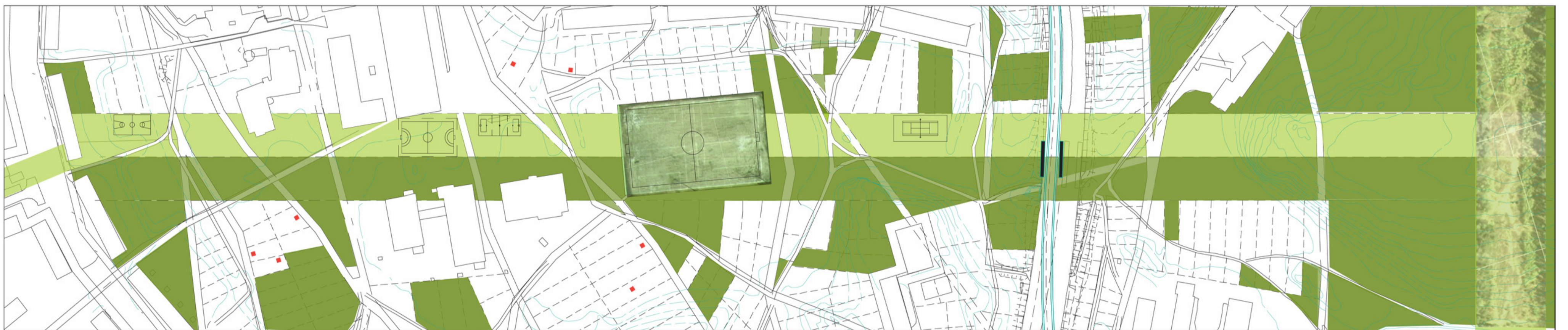
INWARD SPRAWL

(Ungroomed growth.) Time is an important factor in any city and this plan seeks to utilise the time factor to its maximum. While the plan could accommodate the average hectic speed of erection it is engineered to slow things down and let growth and adaption take its time. The proposal questions the automatic value of aiming for a finished state.



PARK AND SLY CORRIDOR THROUGH VILBERGEN VALLEY

scale 1:2,000



PREFAB SPROUTS

Water, sewer and electricity mains can be delivered with a basic unit. The basic unit can act as dressing room, tool shed or shelter even. It is a general starting point, aimed at people who rent as much as they who lease or buy.

GROWTH

This project is about growth but not necessarily economical growth but growth in citizen presence. It is an attempt at widening the field, and the main product is active part-taking.

BORDERLINE

Blurring the public and private, the private and professional, the urban and the rural, culture, nature and city, leisure and work, town and country, inner city and suburb, planned and unplanned, production and recreation.

BASIC UNIT USE

scenario of development

